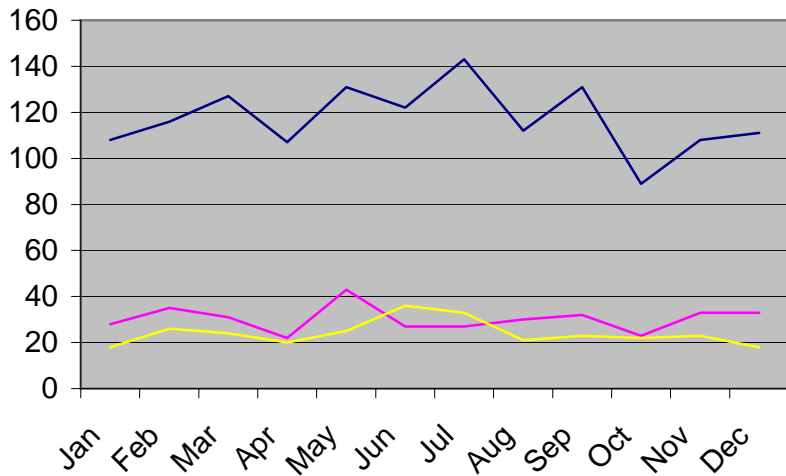
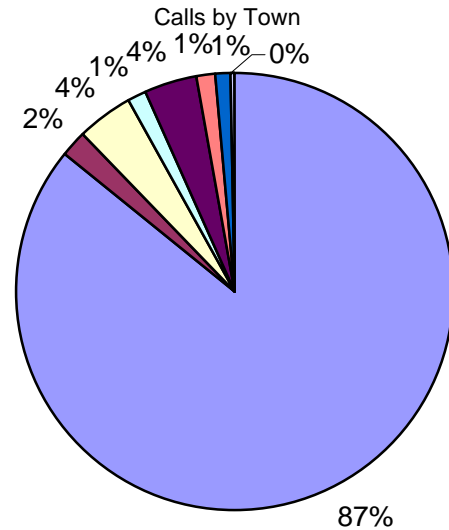


Winsted Area Ambulance Association Call Statistics - 2005

Town/Month	Jan	Feb	Mar	Apr	May	Jun	Jul	Aug	Sep	Oct	Nov	Dec	Total
Winsted	93	106	99	85	110	107	121	102	115	78	90	99	1205
Winchester	1	0	3	4	2	2	6	1	3	1	4	2	29
Colebrook	3	2	10	8	9	1	7	4	3	5	4	2	58
Riverton	5	1	5	1	4	1	0	0	0	0	1	1	19
Barkhamsted	2	5	6	3	3	8	6	4	5	4	4	4	54
West Hartland	2	1	1	3	1	1	1	0	5	1	3	1	20
New Hartford	2	1	3	3	2	2	2	1	0	0	0	2	18
Norfolk	0	0	0	0	0	0	0	0	0	0	2	0	2
Monthly Total	108	116	127	107	131	122	143	112	131	89	108	111	111
Year to Date	108	224	351	458	589	711	854	966	1097	1186	1294	1405	1405
No Transport	18	26	24	20	25	36	33	21	23	22	23	18	289
Paramedic	28	35	31	22	43	27	27	30	32	23	33	33	364



— Number of Calls
— Paramedic
— No Transport



■ Winsted
■ Winchester
■ Colebrook
■ Riverton
■ Barkhamsted
■ West Hartland
■ New Hartford
■ Norfolk